



# RIMEX

## METALS GROUP

Dynamic metal finishes suitable for:

Architecture • Elevators • Machinery • Engineering • Refrigeration • Transport



# PRODUCT BENEFITS

## PATTERNED FINISHES

### AESTHETICS

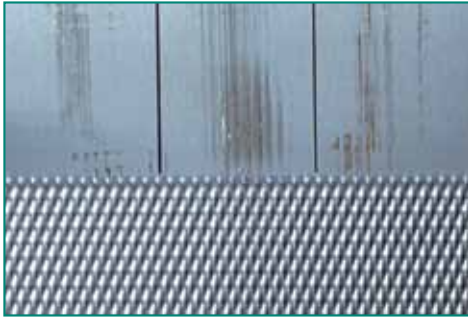
The Patterned Finishes provide a large selection of random and symmetrical designs that are modern and attractive in appearance.

### OIL CANNING

Oil canning can be reduced by using the Patterned Finishes to provide improved optical flatness making the product ideal for cladding systems.

### DURABILITY

The presence of a Patterned Finish will hide scratches, dents and other impact damage unlike plain flat and polished metals which too readily reveal the lightest of impact. The Patterned Finishes from Rimex are tried and tested, having been used for over 40 years because of their anti-vandal and durable properties.



Test sample illustrating the scratch resistance properties of Rimex's Patterned Finishes as compared to a satin polished finish.

### LONG TERM COST SAVINGS

As a direct consequence of the strength and durability benefits provided by the Patterned Finishes, long term cost savings are provided through reduced maintenance and replacement in applications such as elevators, columns, doors etc.

### LOW FRICTION SERVICES

The patterning process provides a reduced contact area so reducing friction problems common in food, drink and photographic machinery. This can significantly speed up production flow.

### HEAT INSULATION AND DISSIPATION

The appliance industry uses the Patterned Finishes because they provide heat insulation and dissipation advantages.



Leeds University Archive, GB-Leeds  
Rimex finish MIRROR Bronze ColourTex®

### WEIGHT SAVING

The patterning process increases the strength and rigidity of the of metal, enabling lighter gauges to be used with consequential cost and weight saving.

### REFLECTIVE SURFACES

The Patterned Finishes are used in the lighting industry to break up glare.

## COLOURTEX® FINISHES

### VIBRANT APPEARANCE

The ColourTex® Product is unique in colour and the perspective that it provides. Unlike painted or other coloured metal products that can be flat in appearance, ColourTex® is reflective, lively and makes a dynamic material for construction projects, retail and catering applications and miscellaneous product use.

### ADDITIONAL CORROSION RESISTANCE

The ColourTex® process has been shown to enhance the resistance of stainless steel to corrosive elements on exterior applications on buildings.

### SIGNS

The ColourTex® Finishes are ideal for signs where the colours are lively, vibrant and will not tarnish.



## GRANEX™ FINISHES

### APPEARANCE

GRANEX™ is a matt finish that is ideal for subtle design applications.

GRANEX™ is a high quality non-reflective and non-directional finish.

### NON-REFLECTIVITY (REDUCED REFLECTIVITY)

The GRANEX™ finish. can be supplied in various levels of coarseness which provide different levels of reflectivity.

### CONSISTENT BEAD BLAST FINISH ON SHEET MATERIAL

Rimex is expert at raw material selection and the provision of finishes on metals. Most bead blast manufacturers are not used to manufacturing sheet bead blast product and selecting suitable raw material. As a consequence the consistency of finish can be poor. Rimex has this expertise with the result that GRANEX™ is a reliably consistent finish.

### RAW MATERIAL MANAGEMENT

With all the finishes manufactured by Rimex, raw material selection is crucial to the standard and quality of the final product that is supplied. Rimex are expert in material handling having been in the metal finishing industry since 1959.

## METALART™ FINISHES

### RANGE OF SELECTION

Rimex has over 50 standard MetalArt™ Finishes to select from plus:

### CUSTOM DESIGNS

The flexibility of the MetalArt™ Finishes mean that unique designs are easily and affordably created.

### COMBINATION FINISHES

The in-house manufacturing capabilities of Rimex means that multiple and combination finishes can be utilised to create designs on metal that are truly unique.



Aloft Hotel, GB - London  
Rimex finish PAGODA Green GRANEX™ ColourTex®

Product catalogue for the metal finishes manufactured by the Rimex Metals Group including Patterned, Bead Blasted and Polished finishes, ColourTex® coloured stainless steel and the MetalArt™ range of custom designed finishes.

ARCHITECTURE



ELEVATORS



MACHINERY



ENGINEERING



REFRIGERATION



TRANSPORT



## GROUP STATEMENT

The Rimex Metals Group has been producing surface finishes on stainless steel and other metals since 1959. With comprehensive manufacturing facilities in the UK, the U.S.A., Australia and South Africa; stocking and distribution in Germany and a global network of agents and distributors, Rimex is capable of delivering to anywhere in the world an extensive selection of exciting and dynamic finishes on a range of metals that include:

- ◆ **Textured patterns** produced by a unique cold rolling process to create 3-dimensional patterns on all types of metal.
- ◆ The **VORTEX™** finish which is an exclusive, subtle and non-directional polish, that can be applied onto all types of metals.
- ◆ The **ColourTex®** range of coloured stainless steel.
- ◆ The **GRANEX™** finishes which is Rimex's bead blasted product range.
- ◆ **MetalArt™** finishes which represent state of the art surface finishing technology enabling standard and custom designs to be etched, bead blasted or coloured into stainless steel and other architectural metals.
- ◆ Rimex **Super Mirror** which is highly polished stainless steel.
- ◆ **RigiTube™** which is a patterned tube product.

With such a large selection of surface finishes, Rimex has established itself as the leader in the field of superior surface technology on metals.

Customer service and satisfaction is our priority and combined with an extensive and continued investment programme the Rimex Metals Group intends to retain its position at the forefront of metal finishing technology.

---

---

---

---

---

---

---

---

---

---

---

---

---

---

---

---

---

---

---

---

---

---

---

---

### NOTE:

- 1. Sample Statement:** Samples supplied by Rimex are for promotional purposes only and are not to be used as control materials for goods supplied. If control samples are required for a specific order Rimex needs to be notified in advance.
- 2. Product Images Statement:** Product images are not to scale. They are scaled to give the best visual representation of the product.
- 3. Promotional Advice and Materials Statement:** All data, images, drawings, descriptions and other information furnished by Rimex including verbal information, in or on its website, catalogues, brochures, CD's, pamphlets, price lists, documents or any other promotional media are intended to be as accurate as possible but are given for general information only and are not binding on Rimex in respect of a particular order. All information, unless stated otherwise, is subject to reasonable variations. Rimex does not accept responsibility for errors or information which is found to be misleading. Before using products supplied or manufactured by Rimex, the customer should satisfy itself of their suitability for any required purpose.
- 4. Protective Tape Statement:** Unless ordered to the contrary all material is coated with standard commercial protective tape. No warranty is provided by Rimex as to the suitability of coating used. A copy of appropriate data sheets are available upon request. If a warranty is required the customer should deal direct with a protective tape supplier and notify Rimex of the coating to be used. The use of non-standard protective tape might be an additional cost to previously quoted prices. Protective tape should be removed as soon as practical and should not be exposed to direct sunlight and temperatures that might cause delamination of adhesive on the coating. The customer is always advised to seek information from the coating manufacturer. Rimex cannot provide information or warranties in respect of protective tape.

Rimex Metals (UK) Ltd is  
BS EN ISO 9002 accredited.



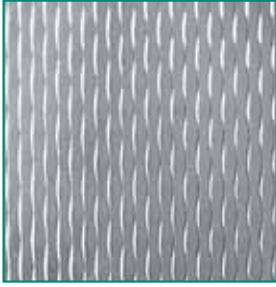
# PATTERNED FINISHES

The Patterned Finishes are manufactured by cold rolling various metals in sheet and coil format. The patterned product is then levelled and processed for flatness.

## NOTE:

Standard manufacturing parameters are stated throughout this product catalogue. Please enquire for non-standard requirements as these may be possible.

The pattern definition can fall outside normal definition and registration requirements for gauges thicker than 1,5 mm. Pattern definition will change with thicker gauges and can differ to samples. Pattern definition can also vary with different batch materials and with separate orders.

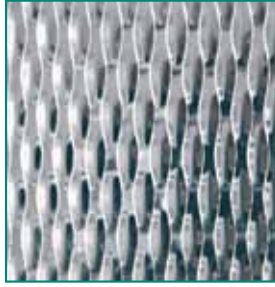


**2WL**

**Width:**  
1000 mm and 1250 mm STANDARD

**Gauge (Stainless Steel):**  
0,4 mm MIN 1,0 mm MAX

**Gauge (Aluminium):**  
0,4 mm MIN 1,2 mm MAX

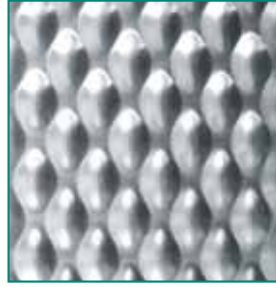


**5WL**

**Width:**  
1000 mm and 1250 mm STD, 1500 mm ON REQUEST

**Gauge (Stainless Steel):**  
0,3 mm MIN 2,0 mm MAX

**Gauge (Aluminium):**  
0,4 mm MIN 2,5 mm MAX

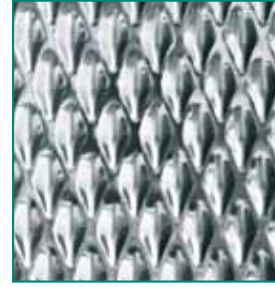


**6WL**

**Width:**  
1000 mm and 1250 mm STANDARD

**Gauge (Stainless Steel):**  
0,1 mm MIN 2,5 mm MAX

**Gauge (Aluminium):**  
0,4 mm MIN 3,0 mm MAX

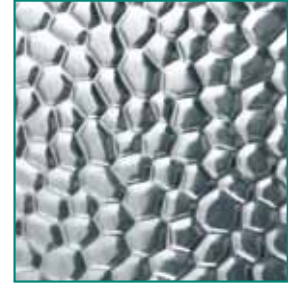


**7GM®**

**Width:**  
1000 mm and 1250 mm STANDARD

**Gauge (Stainless Steel):**  
0,4 mm MIN 2,0 mm MAX

**Gauge (Aluminium):**  
0,4 mm MIN 2,5 mm MAX



**8HP**

**Width:**  
1000 mm STANDARD

**Gauge (Steel):**  
0,4 mm MIN 1,0 mm MAX

**Gauge (Aluminium):**  
0,4 mm MIN 1,0 mm MAX

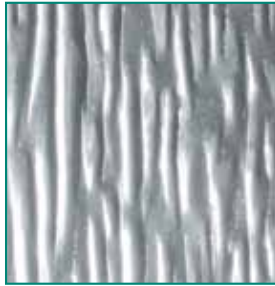


**9EH**

**Width:**  
1000 mm and 1250 mm STD, 1500 mm ON REQUEST

**Gauge (Stainless Steel):**  
0,4 mm MIN 2,0 mm MAX

**Gauge (Aluminium):**  
0,4 mm MIN 2,0 mm MAX



**10WG**

**Width:**  
1000 mm and 1250 mm STANDARD

**Gauge (Stainless Steel):**  
0,4 mm MIN 1,5 mm MAX

**Gauge (Aluminium):**  
0,4 mm MIN 2,0 mm MAX

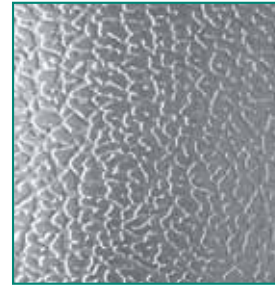


**IIPS**

**Width:**  
1000 mm and 1250 mm STANDARD

**Gauge (Stainless Steel):**  
0,4 mm MIN 1,5 mm MAX

**Gauge (Aluminium):**  
0,4 mm MIN 1,5 mm MAX

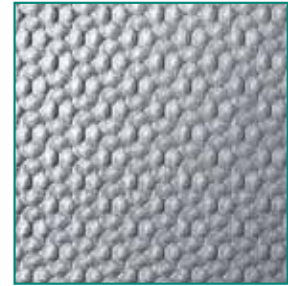


**LEATHER OneTex™**  
(Stainless Steel only)

**Width:**  
1250 mm STANDARD

**Gauge (Stainless Steel):**  
0,8 mm, 1,2 mm, 1,5 mm STANDARD

OTHER GAUGES BY APPLICATION.



**13SD**

**Width:**  
1000 mm and 1250 mm STANDARD

**Gauge (Stainless Steel):**  
0,4 mm MIN 1,0 mm MAX

**Gauge (Aluminium):**  
0,4 mm MIN 1,0 mm MAX

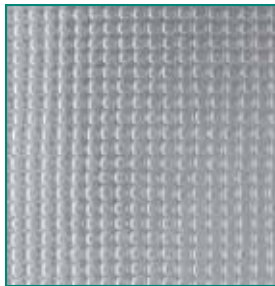


**CAMBRIDGE**

**Width:**  
1000 mm and 1250 mm STANDARD

**Gauge (Stainless Steel):**  
0,4 mm MIN 1,5 mm MAX

**Gauge (Aluminium):**  
0,4 mm MIN 2,0 mm MAX

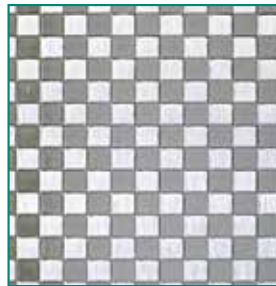


**CANVAS OneTex™**  
(Stainless Steel only)

**Width:**  
1250 mm STANDARD

**Gauge (Stainless Steel):**  
0,8 mm, 1,0 mm, 1,25 mm, 1,5 mm, 2,0 mm

OTHER GAUGES BY APPLICATION.



**CHECKS OneTex™**  
(Stainless Steel only)

**Width:**  
1250 mm STANDARD

**Gauge (Stainless Steel):**  
0,8 mm, 1,0 mm, 1,25 mm, 1,5 mm, 2,0 mm

OTHER GAUGES BY APPLICATION.

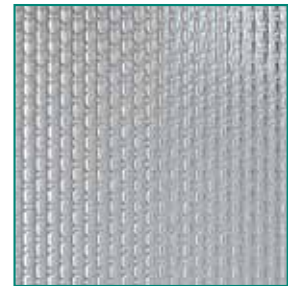


**ICEFLOWER**  
(Stainless Steel only)

**Width:**  
1250 mm STANDARD

**Gauge (Stainless Steel):**  
0,8 mm, 1,25 mm, 1,5 mm STANDARD

OTHER GAUGES BY APPLICATION.



**LINEN OneTex™**  
(Stainless Steel only)

**Width:**  
1250 mm STANDARD

**Gauge (Stainless Steel):**  
0,8 mm, 1,0 mm, 1,25 mm, 1,5 mm, 2,0 mm

OTHER GAUGES BY APPLICATION.

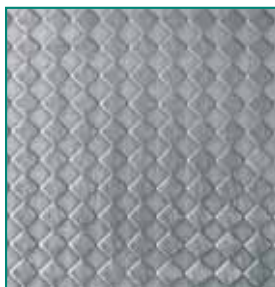


**QUILTED**

**Width:**  
1000 mm and 1250 mm STANDARD

**Gauge (Stainless Steel):**  
0,4 mm MIN 0,8 mm MAX

**Gauge (Aluminium):**  
0,4 mm MIN 1,2 mm MAX



**RHOMBOIDS OneTex™**  
(Stainless Steel only)

**Width:**  
1250 mm STANDARD

**Gauge (Stainless Steel):**  
0,8 mm, 1,2 mm, 1,5 mm, 2,0 mm

OTHER GAUGES BY APPLICATION.



**SQUARES OneTex™**  
(Stainless Steel only)

**Width:**  
1250 mm STANDARD

**Gauge (Stainless Steel):**  
0,8 mm, 1,2 mm, 1,5 mm, 2,0 mm

OTHER GAUGES BY APPLICATION.



**TreadTex®**

**Width:**  
1000 mm and 1250 mm STD, 1500 mm ON REQUEST

**Gauge (Stainless Steel):**  
0,4 mm MIN 3,0 mm MAX

**Gauge (Aluminium):**  
0,4 mm MIN 3,0 mm MAX

## FORMS OF SUPPLY

### METALS

**Stainless steel:** all grades including 1.4016 • 1.4301 • 1.4401 • 1.4404 • 1.4571

**Aluminium:** all grades including 1000, 3000 and 5000 series.

**Brass, Bronze, Copper, Carbon steels, Galvanised steels, Mild steels and Titanium.**

OTHER METALS AVAILABLE UPON REQUEST.

### FINISHES

**Stainless steel:** 2B, bright annealed, bead blasted [see Granex™ Finishes], coloured stainless steel [see ColourTex® Finishes] and various polish options [see Other Polished Finishes].

**Aluminium:** mill, satin, brushed and polished finishes.

### LENGTHS

Standard lengths are 2000 mm, 2500 mm and 3000 mm. Non-STANDARD LENGTHS ARE AVAILABLE UPON REQUEST.

### WIDTHS

Standard widths are 1000 mm and 1250 mm.

INDIVIDUAL PATTERN PARAMETERS ARE AS STATED BELOW THE PRODUCT IMAGES. Non-STANDARD SLIT WIDTH REQUIREMENTS ARE AVAILABLE UPON REQUEST.

PLEASE CHECK GAUGE AND WIDTH COMPATIBILITY BEFORE SPECIFYING OR ORDERING THE 7GM® PRODUCT.

# COLOURTEX® FINISHES

ColourTex® can be combined with the substrate finishes of mirror or satin polishes, GRANEX™ bead blast or with Rimex's other product lines of Patterned or MetalArt™ finishes.

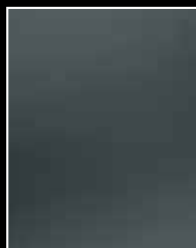
ColourTex® is a sheet product available on stainless steel only. The colours produced under the ColourTex® process are; black, blue, bronze, champagne, gold, green and red.

## NOTE:

The nature of coloured stainless steel is that the colour and/or tone may vary in different lighting conditions, between batches of stainless steel and production runs. It is often necessary to agree control samples prior to manufacture.

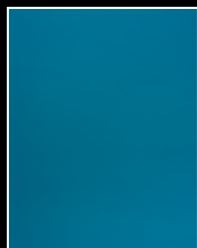
On larger orders it is advisable to agree control samples to define an agreeable colour range prior to the placing of an order. Unless control samples are agreed Rimex is not responsible for differences in tone and appearance of the ColourTex® product.

Due to the nature of the manufacturing process all ColourTex® products will be supplied with holes approximately 5 mm in diameter that run down the length of one side of each sheet every 1000 mm.



**MIRROR  
Black**

Width:  
1250 mm STD  
Gauge:  
0,6 mm MIN 2,0 mm MAX



**MIRROR  
Blue**

Width:  
1250 mm STD  
Gauge:  
0,6 mm MIN 2,0 mm MAX



**MIRROR  
Bronze**

Width:  
1250 mm STD  
Gauge:  
0,6 mm MIN 2,0 mm MAX



**MIRROR  
Champagne**

Width:  
1250 mm STD  
Gauge:  
0,6 mm MIN 2,0 mm MAX



**MIRROR  
Gold**

Width:  
1250 mm STD  
Gauge:  
0,6 mm MIN 2,0 mm MAX



**MIRROR  
Green**

Width:  
1250 mm STD  
Gauge:  
0,6 mm MIN 2,0 mm MAX



**MIRROR  
Red**

Width:  
1250 mm STD  
Gauge:  
0,6 mm MIN 2,0 mm MAX



**SATIN SATIN  
Black Charcoal**

Width:  
1000 mm and 1250 mm STD  
Gauge:  
0,6 mm MIN 2,0 mm MAX



**SATIN  
Electro-Blue**

Width:  
1000 mm and 1250 mm STD  
Gauge:  
0,6 mm MIN 2,0 mm MAX



**SATIN  
Electro-Bronze**

Width:  
1000 mm and 1250 mm STD  
Gauge:  
0,6 mm MIN 2,0 mm MAX



**SATIN  
Electro-Champagne**

Width:  
1000 mm and 1250 mm STD  
Gauge:  
0,6 mm MIN 2,0 mm MAX



**SATIN  
Electro-Gold**

Width:  
1000 mm and 1250 mm STD  
Gauge:  
0,6 mm MIN 2,0 mm MAX



**SATIN  
Electro-Green**

Width:  
1000 mm and 1250 mm STD  
Gauge:  
0,6 mm MIN 2,0 mm MAX



**SATIN  
Electro-Red**

Width:  
1000 mm and 1250 mm STD  
Gauge:  
0,6 mm MIN 2,0 mm MAX



**CHECKS**

Width:  
1250 mm STANDARD  
Gauge:  
0,8 mm, 1,2 mm, 1,5 mm STD  
OTHER GAUGES BY APPLICATION.



**LEATHERGRAIN**

Width:  
1250 mm STANDARD  
Gauge:  
0,8 mm, 1,2 mm, 1,5 mm STD  
OTHER GAUGES BY APPLICATION.



**PAGODA**

Width:  
1000 mm and 1250 mm STD  
Gauge:  
0,5 mm MIN 1,5 mm MAX



**PALADIN**

Width:  
1000 mm and 1250 mm STD  
Gauge:  
0,5 mm MIN 0,8 mm MAX



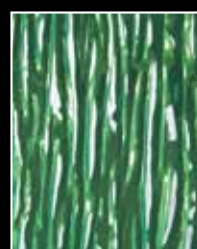
**PAMPAS**

Width:  
1000 mm and 1250 mm STD  
Gauge:  
0,5 mm MIN 0,8 mm MAX



**PEARL**

Width:  
1000 mm and 1250 mm STD  
Gauge:  
0,5 mm MIN 1,5 mm MAX



**PEGASUS**

Width:  
1000 mm and 1250 mm STD  
Gauge:  
0,5 mm MIN 1,5 mm MAX



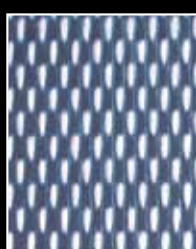
**PINSTRIP**

Width:  
1000 mm and 1250 mm STD  
Gauge:  
0,5 mm MIN 1,5 mm MAX



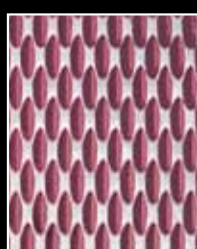
**PIPPIN**

Width:  
1000 mm and 1250 mm STD  
Gauge:  
0,5 mm MIN 1,5 mm MAX



**POPPY**

Width:  
1000 mm and 1250 mm STD  
Gauge:  
0,5 mm MIN 0,8 mm MAX



**PRISM**

Width:  
1000 mm and 1250 mm STD  
Gauge:  
0,5 mm MIN 1,5 mm MAX



**PYRAMID**

Width:  
1000 mm and 1250 mm STD  
Gauge:  
0,5 mm MIN 1,5 mm MAX



**QUILTED**

Width:  
1000 mm and 1250 mm STD  
Gauge:  
0,5 mm MIN 0,8 mm MAX

## FORMS OF SUPPLY

### METALS

Stainless steel: all grades including 1.4016 (limited) • 1.4301 • 1.4401 • 1.4404

### FINISHES

Stainless steel: mirror, satin and vibration polishes [see Other Polished Finishes], bead blasted [see GRANEX™ Finishes] and patterned coloured stainless steel [see ColourTex® Finishes] and combined with custom etched designs [see MetalArt™ Finishes].

### LENGTHS

Standard lengths are 2000 mm, 2500 mm and 3000 mm and the maximum length is 3100 mm.

NON-STANDARD LENGTHS ARE AVAILABLE UPON REQUEST.

### WIDTHS

Standard widths are 1000 mm and 1250 mm. INDIVIDUAL PATTERN PARAMETERS ARE AS STATED BELOW THE PRODUCT IMAGES. NON-STANDARD SLIT WIDTH REQUIREMENTS ARE AVAILABLE UPON REQUEST. PLEASE CHECK GAUGES AND WIDTH COMPATIBILITY BEFORE SPECIFYING OR ORDERING THE PYRAMID PRODUCT.

## BEAD BLASTED/GRANEX™ FINISHES

The GRANEX™ Finishes involve the controlled bead blasting of sheet and coil stainless steel and other metals with various media to produce a range of matt finishes in different coarsenesses.

Most bead blast providerspeen components rather than sheet material. By comparison because Rimex has extensive expertise in sheet raw material selection and handling alongside its abilities in metal finishing, the GRANEX™ finishes produced by Rimex are more reliably consistent and are of a superior quality to those offered by other producers.



**GRANEX™ MIA**

Width: 1000 mm,  
1250 mm and 1500 mm STD  
Gauge (Stainless Steel):  
0,8 mm - 5,0 mm+



**GRANEX™ CIA**

Width: 1000 mm,  
1250 mm and 1500 mm STD  
Gauge (Stainless Steel):  
0,8 mm - 5,0 mm+

### FORMS OF SUPPLY

**METALS**  
Stainless steel: all grades including 1.4016 • 1.4301 • 1.4401 • 1.4404  
OTHER METALS MANUFACTURED UPON REQUEST.

**FINISHES**  
Stainless steel: 2B, bright annealed, patterned finishes, coloured stainless steel [see ColourTex™ Finishes].

**LENGTHS**  
Standard lengths are 2000 mm, 2500 mm and 3000 mm.  
NON-STANDARD LENGTHS ARE AVAILABLE UPON REQUEST.

**WIDTHS**  
Standard widths are 1000 mm and 1250 mm.  
NON-STANDARD LENGTHS ARE AVAILABLE UPON REQUEST.

**NOTE:**  
Thicker gauges are available but the consistency of the visual appearance of raw material tends to deteriorate over 2,0 mm and this can effect the appearance of the GRANEX™ Finishes with thicker gauges.

The GRANEX™ product can be supplied with minor defects which are present in the raw material. This is the nature of the finish.



**GRANEX™ Black**

Width: 1000 mm and  
1250 mm STD  
Gauge (Stainless Steel):  
0,8 mm MIN 1,5 mm MAX



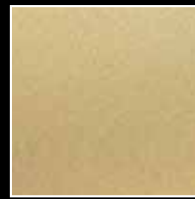
**GRANEX™ Blue**

Width: 1000 mm and  
1250 mm STD  
Gauge (Stainless Steel):  
0,8 mm MIN 1,5 mm MAX



**GRANEX™ Bronze**

Width: 1000 mm and  
1250 mm STD  
Gauge (Stainless Steel):  
0,8 mm MIN 1,5 mm MAX



**GRANEX™ Champagne**

Width: 1000 mm and  
1250 mm STD  
Gauge (Stainless Steel):  
0,8 mm MIN 1,5 mm MAX



**GRANEX™ Gold**

Width: 1000 mm and  
1250 mm STD  
Gauge (Stainless Steel):  
0,8 mm MIN 1,5 mm MAX



**GRANEX™ Green**

Width: 1000 mm and  
1250 mm STD  
Gauge (Stainless Steel):  
0,8 mm MIN 1,5 mm MAX



**GRANEX™ Red**

Width: 1000 mm and  
1250 mm STD  
Gauge (Stainless Steel):  
0,8 mm MIN 1,5 mm MAX

## VORTEX™

**VORTEX™ is a non directional polish, which brings to the fore the softer qualities of stainless steel in architectural design, through a diffusing effect at the material surface. The soft sheen resulting from the polishing process takes the specifier away from the historic and limiting constraints of the 240 silicon grit type flat polished steel products into new and exciting areas.**

Four standard polish options which vary in the intensity of the polish and gloss of the finish, can give further control over the detail within a given application and environment. Introduction of coloured variants of these options brings added exclusivity to the product and individuality to the project.



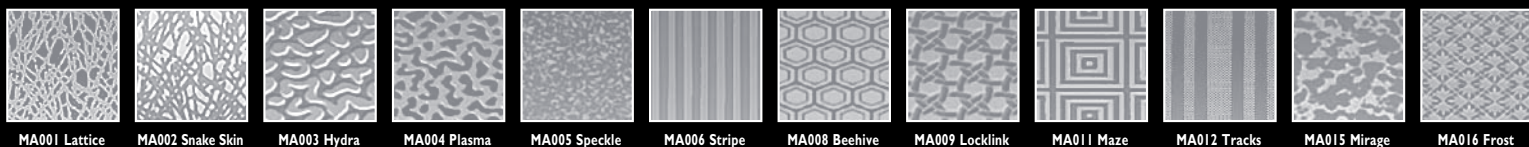
## METALART™ FINISHES

The MetalArt™ Finishes is a collective description of the effects that can be produced on stainless steel and other metals by different processes that include controlled etching, the ColourTex® or bead blasting processes, colour stripping or any of the other processes manufactured by Rimex.

### NOTE:

For full details of the MetalArt™ range, please visit the MetalArt™ section on our website: [www.rimexmetals.com](http://www.rimexmetals.com)

Unique and custom designs are easily produced by transferring your computer generated artwork onto stainless steel and other metals.



MA001 Lattice MA002 Snake Skin MA003 Hydra MA004 Plasma MA005 Speckle MA006 Stripe MA008 Beehive MA009 Locklink MA011 Maze MA012 Tracks MA015 Mirage MA016 Frost

## CUSTOM METALART™ FINISHES

Some illustrations of custom MetalArt™ Finishes.

These can be simple or complex designs utilising several finishing techniques including etching, the ColourTex® or bead blasting processes, colour stripping or any of the other processes manufactured by Rimex.



### FORMS OF SUPPLY

**METALS**  
Stainless steel: all grades including 1.4301 • 1.4401 • 1.4404  
OTHER ARCHITECTURAL METALS SUCH AS BRASS AND BRONZES ARE POSSIBLE.

**FINISHES**  
Bead blasted, etched, polishes including brush, satin and mirror polishes, utilisation of the ColourTex™ process, colour stripping; all of these can be used in combination together.  
PLEASE ASK FOR FURTHER DETAILS.

**LENGTHS**  
Standard lengths are 2000 mm and 2500 mm.  
LONGER LENGTHS ARE AVAILABLE UPON REQUEST.

**WIDTHS**  
Standard widths are 1000 mm and 1250 mm.  
**GAUGES**  
0,8 mm to 1,5 mm as standard.

# SUPERMIRROR



Rimex's SuperMirror is as near a perfect polish that can be produced on stainless steel. SuperMirror is blemish free and has perfect reflective quality.

The reflectivity of SuperMirror creates light and space and is easily fabricated. Unlike glass mirror, SuperMirror can be used in food preparation, ceiling and high pedestrian areas because it will not shatter.

Rimex's SuperMirror – higher quality than Mirror No. 7 – superior quality of mirror-polished stainless steel.



## FORMS OF SUPPLY

### METALS

Stainless Steel: all grades including 1.4301 • 1.4404

### LENGTHS

2440 mm and 3050 mm.

OTHER SIZES SUPPLIED BY SPECIAL ARRANGEMENT AND SUBJECT TO MINIMUM QUANTITIES.

No.7 MIRROR POLISHED STAINLESS STEEL ALSO AVAILABLE UPON REQUEST.

### WIDTHS

1220 mm.

### GAUGES

0.8 mm, 1.0 mm, 1.2 mm, 1.5 mm and 2.0 mm.



# OTHER POLISHED FINISHES

Rimex manufactures the full range of polished finishes and combined with its raw material expertise can offer a high quality product and service. All metals including stainless steel and aluminium can be polished.

Polished finishes manufactured by Rimex are:

### Belt polishes:

- ◆ Silicon 120 to 320 Grit.
- ◆ Aloxide 40 to 180 Grit.
- ◆ Rimex operates a 2000 mm wide belt-polishing machine for wide material requirements.
- ◆ Diagonal and horizontal polishing is also available.

### Brush polishes:

- ◆ Brush polish.
- ◆ Hairline polish.

### Mirror Finishes:

- ◆ No.7 polish.
- ◆ See above for Super Mirror.

### Custom polishes:

- ◆ Angel Hair / Vibration Polish which is a random and delicate brush polish.
- ◆ Engine Turn / Circle Polishing.
- ◆ Combination or blended polishes are also possible. Please ask for further information.
- ◆ Multi-Directional polishes. Please ask for further information.



Multi-Directional polish - Basketweave Finish.

# RIGITUBE™



RigiTube® is a patterned tube product that provides grip, durability and aesthetics that plain unpatterned tubing fails to offer.

Approved by disabled associations as a safety fitting because of its properties in providing grip to transit, engineering and architectural applications RigiTube® has practical benefits beyond aesthetics.

Durable and readily fabricated, RigiTube® can be used in all environments for foot and hand rail purposes. The use of a pattern will also hide and deflect scratches and dents.



## FORMS OF SUPPLY

### METALS

Stainless Steel: all grades including 1.4016 • 1.4301 • 1.4404

### DIAMETERS

30 mm and 35 mm.

### LENGTHS

3000 mm and 6000 mm.

REQUIREMENTS OUTSIDE THESE FORMS OF SUPPLY BY SPECIAL ARRANGEMENT.

### GAUGES

1.2 mm and 1.5 mm.

### PATTERNS

6WL, 7GM® and 7GM® reverse are sold as standard.

OTHER PATTERNS ARE AVAILABLE ON REQUEST AND MAY BE SUBJECT TO MINIMUM QUANTITY REQUIREMENTS.

## Rimex Metals Group:

Website: [www.rimexmetals.com](http://www.rimexmetals.com)  
[www.rimexmetals.com/cgi](http://www.rimexmetals.com/cgi)

### Rimex Metals Architectural Ltd

Aden Road  
Ponders End  
Enfield, Middlesex  
EN3 7SU  
United Kingdom

Tel: +44 (0) 20 8804 0633  
Fax: +44 (0) 20 8804 7275  
Email: [sales@rimexmetals.com](mailto:sales@rimexmetals.com)

### Rimex Metals (Australia) Pty Ltd

6 Warringah Close  
Somersby  
NSW 2250  
Australia

Tel: +61 (2) 4340 559 9  
Fax: +61 (2) 4340 552 5  
Email: [sales@rimexmetals.com.au](mailto:sales@rimexmetals.com.au)

### Rimex Agent for France Solutinox SARL

10 Chemin De Perpignan  
31100 Toulouse  
France

Tel: +33 (0) 56 70 65 188  
Fax: +33 (0) 17 37 90 456  
Email: [alaguardia@solutinox.com](mailto:alaguardia@solutinox.com)

### Rimex Metals (Deutschland) GmbH

Schießwiesen 4  
73650 Winterbach  
Germany

Tel: +49 (0) 7181 70 96 0  
Fax: +49 (0) 7181 70 96 10  
Email: [info@rimex-metals.de](mailto:info@rimex-metals.de)

### Rimex Metals (South Africa) Pty Ltd

372 Kruger Road  
Styrdom Park Ext 20  
PO Box 1255  
Randburg 2125  
South Africa

Tel: +27 (11) 793 369 5/8  
Fax: +27 (11) 792 287 2  
Email: [rimex@mweb.co.za](mailto:rimex@mweb.co.za)

### Rimex Agent for Spain In-Metals Inoxidables SL

Poligono Industrial Lastaola  
Pabellón 101, Nave 2-12,  
20120 Hernani (Guipúzcoa)  
Spain

Tel: +34 (94) 321 929 1  
Fax: +34 (94) 322 501 2  
Email: [info@in-metals.com](mailto:info@in-metals.com)

### Rimex Metals (USA) Inc

2850 Woodbridge Avenue  
Edison  
New Jersey 08837  
USA

Tel: +1 (732) 549 38 00  
Fax: +1 (732) 549 64 35  
Email: [sales@rimexusa.com](mailto:sales@rimexusa.com)

Rimex is also represented in many other countries not listed above. For further details please contact your local Rimex office.



### Rimex Metals (UK) Ltd

Aden Road  
Ponders End  
Enfield  
Middlesex  
EN3 7SU  
United Kingdom

Tel: +44 (0) 20 880 406 33  
Fax: +44 (0) 20 880 472 75  
Email: [sales@rimexmetals.com](mailto:sales@rimexmetals.com)  
Website: [www.rimexmetals.com](http://www.rimexmetals.com)  
[www.rimexmetals.com/cgi](http://www.rimexmetals.com/cgi)

## Specialists in Metal Finishes

## Download the new Rimex APP!



iPhone/iPad



Android



With manufacturing and supply throughout the world



### DISCLAIMER

All assistance and advice given by the Rimex Metals Group and its affiliated companies, on its website including all downloaded information and drawings, in its literature and sales promotion material, by its personnel, agents or representatives is provided in good faith. Such assistance is not intended to form part of any contract, or to be a guarantee or warranty of any Rimex product or design to be fit for any purpose and no liability can be accepted for errors contained in such advice, drawings or information. You are advised to check all information provided by the Rimex Metals Group and its affiliated companies with other sources. Written and drawn specifications, test results and all information received from Rimex are intended as suggestions only; their accuracy cannot be guaranteed in any way.

© Rimex Metals 2015/01